

# Daisy Star



@timr38

Overall quilt size: 60" x 72"





## Blocks Used



Electric Fan - 8 blocks



Solid - 71 blocks

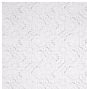


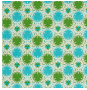



Four Patch - 4 blocks

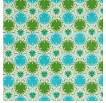


Hourglass - 16 blocks

## Block Info

Fabric	Pieces used	Fabric to cut	Total length needed	40" strips needed	Total Yardage
	64 Quarter-square Triangle(s) 43 Square(s)	8 - 4 1/4" square 43 - 6 1/2" square 8 - 7 1/4" square	34 x 4.25" 279.5 x 6.5" 58 x 7.25"	1 - 4 1/4" wide 7 - 6 1/2" wide 2 - 7 1/4" wide	67" = ~1 7/8 yds
	32 Quarter-square Triangle(s) 8 Square(s)	8 - 4 1/4" square 8 - 3 1/2" square	34 x 4.25" 28 x 3.5"	1 - 4 1/4" wide 1 - 3 1/2" wide	10" = ~3/8 yds
	64 Quarter-square Triangle(s) 24 Square(s)	16 - 4 1/4" square 24 - 6 1/2" square	68 x 4.25" 156 x 6.5"	2 - 4 1/4" wide 4 - 6 1/2" wide	37" = ~1 1/8 yds
	12 Square(s)	8 - 3 1/2" square 4 - 6 1/2" square	28 x 3.5" 26 x 6.5"	1 - 3 1/2" wide 1 - 6 1/2" wide	12" = ~3/8 yds
	32 Quarter-square Triangle(s)	8 - 7 1/4" square	58 x 7.25"	2 - 7 1/4" wide	17" = ~1/2 yds

Border1 (For pieced border, add 10" to total length)



Yardage needed: seamless border length = 76" =  $\sim 2 \frac{1}{8}$  yds

## Backing

Yardage needed: 136" =  $\sim 3 \frac{7}{8}$  yds

## Binding

2.5" Strips required: 7

Yardage needed: 17.5" =  $\sim \frac{1}{2}$  yds

NOTE: Directional fabric may require an increase in the displayed fabric requirements.