

Oh Deer



@jpblask97

Overall quilt size: 40" x 50"





Blocks Used

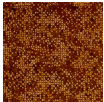


Solid - 20 blocks

Block Info

Fabric	Pieces used	Fabric to cut	Total length needed	40" strips needed	Total Yardage
	10 Square(s)	10 - 10 1/2" square	105 x 10.5"	3 - 10 1/2" wide	34" = ~1 yds
	10 Square(s)	10 - 10 1/2" square	105 x 10.5"	3 - 10 1/2" wide	34" = ~1 yds

Sashing



Yardage needed: 17 - 3.5" strips = 59.5" = ~1 3/4 yds

Backing

Yardage needed: 70" = ~2 yds

Binding

2.5" Strips required: 5

Yardage needed: 12.5" = ~3/8 yds

NOTE: Directional fabric may require an increase in the displayed fabric requirements.