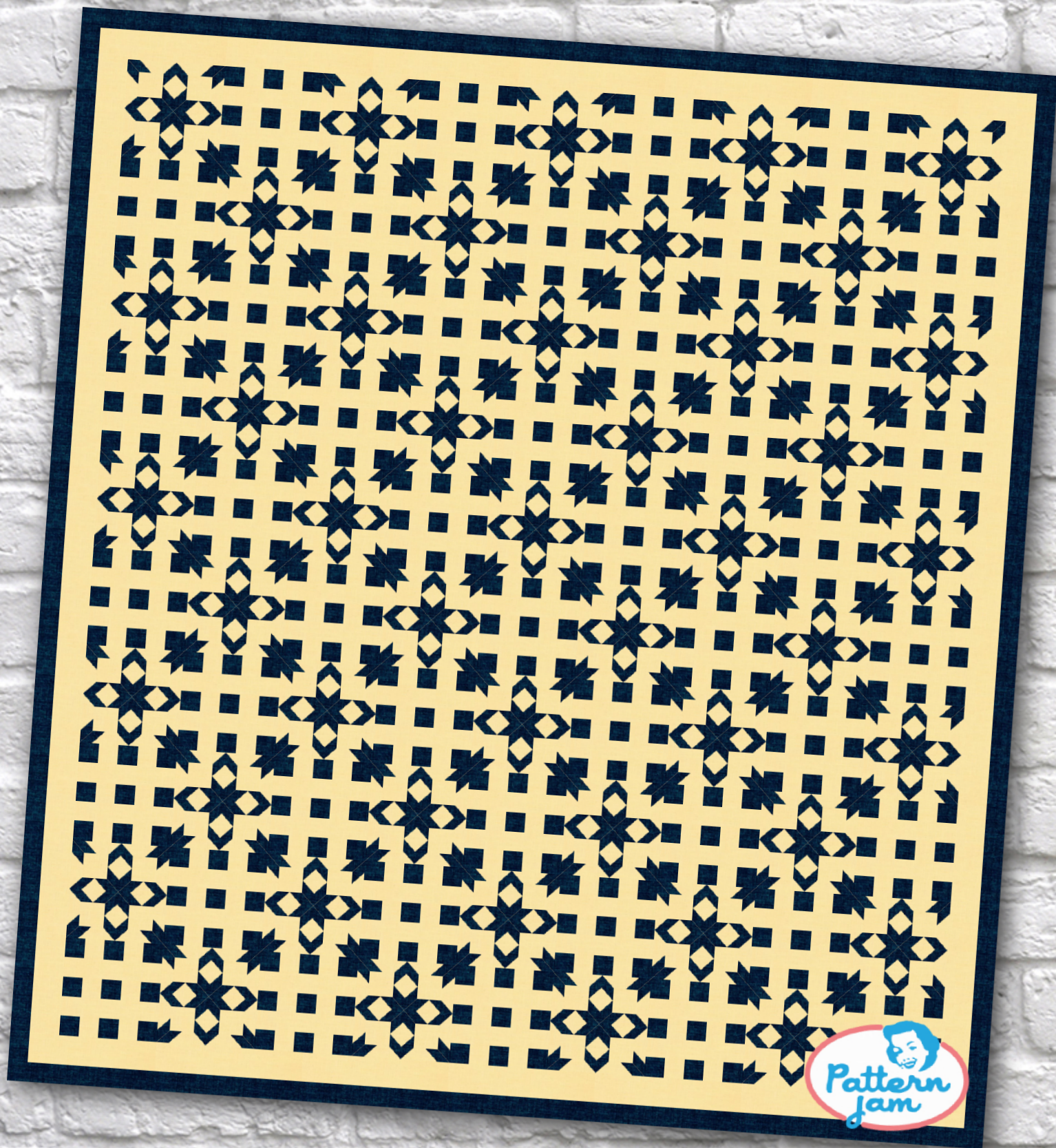


Diamondhead



@firenme8

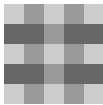
Overall quilt size: 82" x 90"



Blocks Used


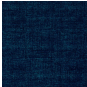


West Virginia Square - 45 blocks



Plaid - 45 blocks

Block Info

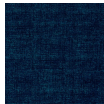
Fabric	Pieces used	Fabric to cut	Total length needed	40" strips needed	Total Yardage
	45 Unique(s) 360 Square(s) 180 Rectangle(s)	45 - Undefined 360 - 2 1/10" square 180 - 2 1/10" x 3 7/10" rectangle	0 x 0" 1422 x 2.1"	0 - 0" wide 36 - 2 1/10" wide	78" = ~2 1/4 yds
	90 Unique(s) 405 Square(s)	90 - Undefined 405 - 2 1/10" square	0 x 0" 850.5 x 2.1"	0 - 0" wide 22 - 2 1/10" wide	49" = ~1 3/8 yds

Border1 (For pieced border, add 10" to total length)



Yardage needed: seamless border length = 90" = ~2 1/2 yds

Border2 (For pieced border, add 10" to total length)



Yardage needed: seamless border length = 94" = ~2 5/8 yds

Backing

Yardage needed: 221" = ~6 1/4 yds

Binding

2.5" Strips required: 9

Yardage needed: 22.5" = ~5/8 yds

NOTE: Directional fabric may require an increase in the displayed fabric requirements.