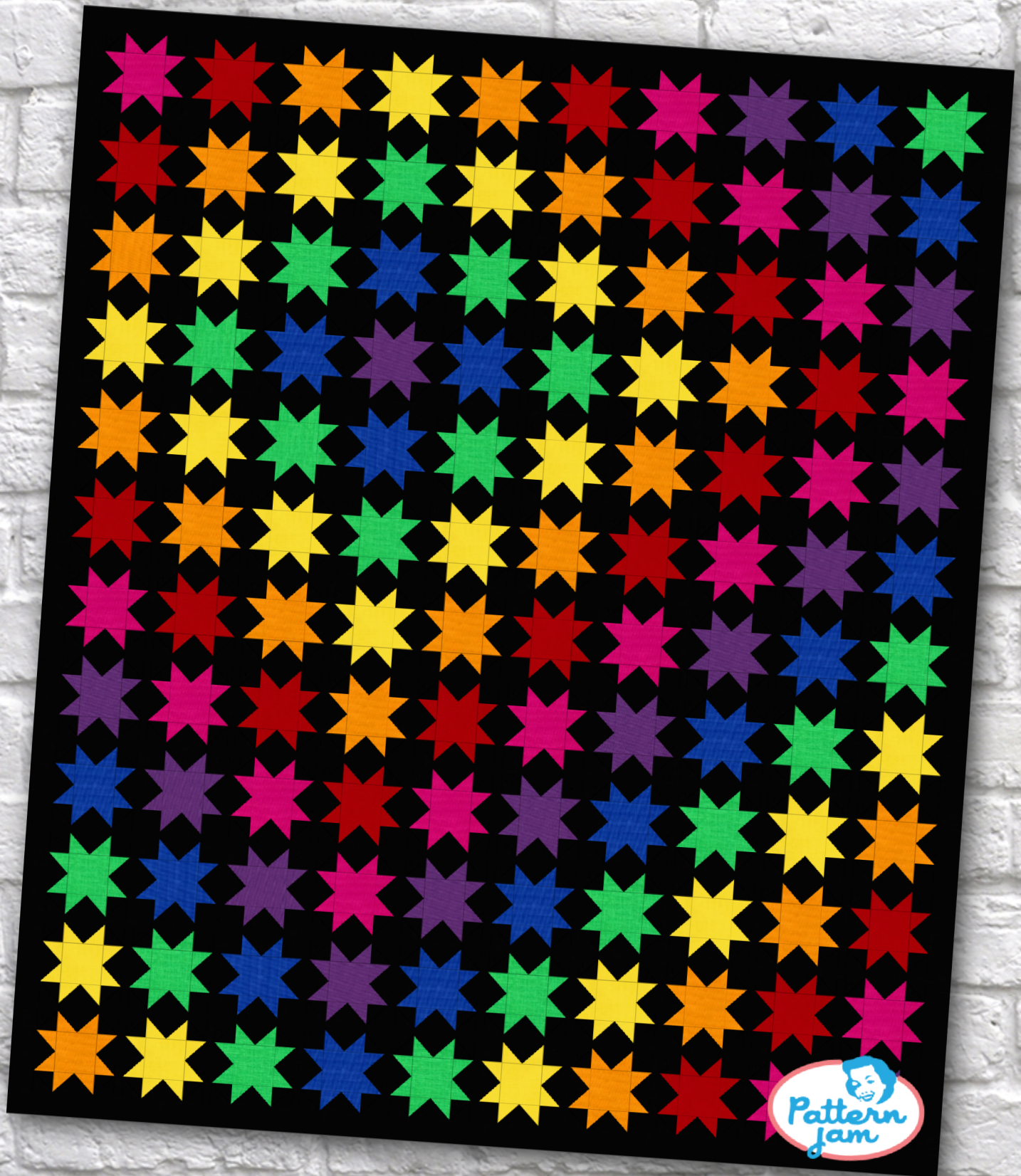


# Star Bright 2



@dilankoda

Overall quilt size: 75" x 89"





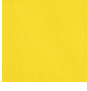


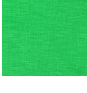


## Blocks Used



Sawtooth Star II - 120 blocks

## Block Info

Fabric	Pieces used	Fabric to cut	Total length needed	40" strips needed	Total Yardage
	960 Quarter-square Triangle(s) 480 Half-square Triangle(s)	240 - 2 3/4" square 240 - 3 7/8" square	660 x 2.75" 930 x 3.875"	17 - 2 3/4" wide 24 - 3 7/8" wide	142" = ~4 yds
	16 Square(s) 128 Quarter-square Triangle(s)	16 - 3 1/2" square 32 - 2 3/4" square	56 x 3.5" 88 x 2.75"	2 - 3 1/2" wide 3 - 2 3/4" wide	18" = ~1/2 yds
	17 Square(s) 136 Quarter-square Triangle(s)	17 - 3 1/2" square 34 - 2 3/4" square	59.5 x 3.5" 93.5 x 2.75"	2 - 3 1/2" wide 3 - 2 3/4" wide	18" = ~1/2 yds
	19 Square(s) 152 Quarter-square Triangle(s)	19 - 3 1/2" square 38 - 2 3/4" square	66.5 x 3.5" 104.5 x 2.75"	2 - 3 1/2" wide 3 - 2 3/4" wide	18" = ~1/2 yds
	19 Square(s) 152 Quarter-square Triangle(s)	19 - 3 1/2" square 38 - 2 3/4" square	66.5 x 3.5" 104.5 x 2.75"	2 - 3 1/2" wide 3 - 2 3/4" wide	18" = ~1/2 yds
	15 Square(s) 120 Quarter-square Triangle(s)	15 - 3 1/2" square 30 - 2 3/4" square	52.5 x 3.5" 82.5 x 2.75"	2 - 3 1/2" wide 3 - 2 3/4" wide	18" = ~1/2 yds
	16 Square(s) 128 Quarter-square Triangle(s)	16 - 3 1/2" square 32 - 2 3/4" square	56 x 3.5" 88 x 2.75"	2 - 3 1/2" wide 3 - 2 3/4" wide	18" = ~1/2 yds
	18 Square(s) 144 Quarter-square Triangle(s)	18 - 3 1/2" square 36 - 2 3/4" square	63 x 3.5" 99 x 2.75"	2 - 3 1/2" wide 3 - 2 3/4" wide	18" = ~1/2 yds

## Sashing



Yardage needed:  $46 - 1.5'' \text{ strips} = 69'' = \sim 2 \text{ yds}$

## Border1 (For pieced border, add 10'' to total length)



Yardage needed: seamless border length =  $93'' = \sim 2 \frac{5}{8} \text{ yds}$

## Backing

Yardage needed:  $202'' = \sim 5 \frac{5}{8} \text{ yds}$

## Binding

2.5'' Strips required: 9

Yardage needed:  $22.5'' = \sim \frac{5}{8} \text{ yds}$

NOTE: Directional fabric may require an increase in the displayed fabric requirements.