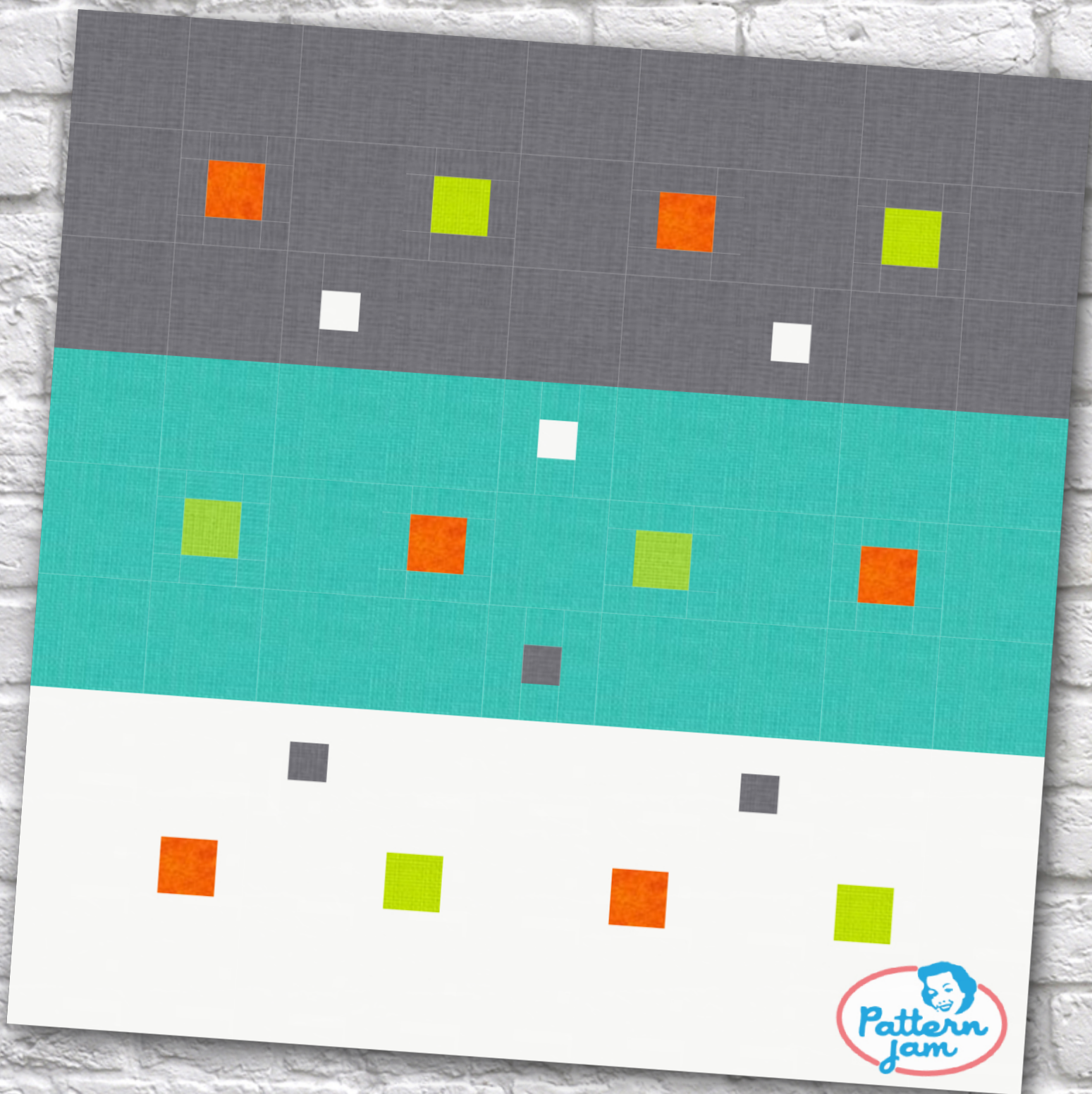


# M&D Wall



@quiltsncrypto

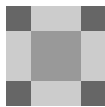
Overall quilt size: 18" x 18"



## Blocks Used



Solid - 63 blocks


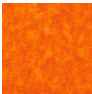






Plain Block - 12 blocks



Block in a Box - 6 blocks

## Block Info

Fabric	Pieces used	Fabric to cut	Total length needed	40" strips needed	Total Yardage
	44 Square(s) 20 Rectangle(s)	21 - 2 1/2" square 16 - 1" square 16 - 1" x 1 1/2" rectangle 4 - 1 1/6" x 2 1/2" rectangle 7 - 1 1/6" square	52.5 x 2.5" 40 x 1" 18.167 x 1.167"	2 - 2 1/2" wide 1 - 1" wide 1 - 1 83/497" wide	10" = ~3/8 yds
	6 Square(s)	6 - 1 1/2" square	9 x 1.5"	1 - 1 1/2" wide	4" = ~1/8 yds
	4 Square(s)	4 - 1 1/2" square	6 x 1.5"	1 - 1 1/2" wide	4" = ~1/8 yds
	44 Square(s) 20 Rectangle(s)	7 - 1 1/6" square 21 - 2 1/2" square 4 - 1 1/6" x 2 1/2" rectangle 16 - 1" square 16 - 1" x 1 1/2" rectangle	18.167 x 1.167" 52.5 x 2.5" 40 x 1"	1 - 1 83/497" wide 2 - 2 1/2" wide 1 - 1" wide	10" = ~3/8 yds
	41 Square(s) 20 Rectangle(s)	21 - 2 1/2" square 4 - 1 1/6" x 2 1/2" rectangle 4 - 1 1/6" square 16 - 1" square 16 - 1" x 1 1/2" rectangle	52.5 x 2.5" 14.667 x 1.167" 40 x 1"	2 - 2 1/2" wide 1 - 1 83/497" wide 1 - 1" wide	10" = ~3/8 yds
	2 Square(s)	2 - 1 1/2" square	3 x 1.5"	1 - 1 1/2" wide	4" = ~1/8 yds

## Backing

Yardage needed: 17" = ~1/2 yds

## Binding

2.5" Strips required: 2

Yardage needed: 5" = ~1/4 yds

NOTE: Directional fabric may require an increase in the displayed fabric requirements.