

# Decolores New



@boord

Overall quilt size: 44" x 72"





## Blocks Used

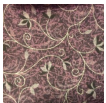


Solid - 144 blocks

## Block Info

Fabric	Pieces used	Fabric to cut	Total length needed	40" strips needed	Total Yardage
	21 Square(s)	21 - 4 1/2" square	94.5 x 4.5"	3 - 4 1/2" wide	16" = ~1/2 yds
	22 Square(s)	22 - 4 1/2" square	99 x 4.5"	3 - 4 1/2" wide	16" = ~1/2 yds
	18 Square(s)	18 - 4 1/2" square	81 x 4.5"	3 - 4 1/2" wide	16" = ~1/2 yds
	25 Square(s)	25 - 4 1/2" square	112.5 x 4.5"	3 - 4 1/2" wide	16" = ~1/2 yds
	18 Square(s)	18 - 4 1/2" square	81 x 4.5"	3 - 4 1/2" wide	16" = ~1/2 yds
	20 Square(s)	20 - 4 1/2" square	90 x 4.5"	3 - 4 1/2" wide	16" = ~1/2 yds
	20 Square(s)	20 - 4 1/2" square	90 x 4.5"	3 - 4 1/2" wide	16" = ~1/2 yds

## Border1 (For pieced border, add 10" to total length)



Yardage needed: seamless border length = 76" = ~2 1/8 yds

## Backing

Yardage needed: 104" = ~3 yds

## Binding

2.5" Strips required: 6

Yardage needed: 15" = ~1/2 yds

NOTE: Directional fabric may require an increase in the displayed fabric requirements.