

Bluebell

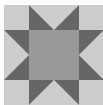


@lynneyboo

Overall quilt size: 58" x 74"



Blocks Used

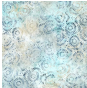
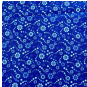

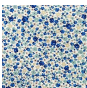



Sawtooth Star - 24 blocks

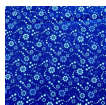


Block in a Box - 24 blocks

Block Info

Fabric	Pieces used	Fabric to cut	Total length needed	40" strips needed	Total Yardage
	96 Square(s) 96 Quarter-square Triangle(s)	96 - 2 1/2" square 24 - 5 1/4" square	240 x 2.5" 126 x 5.25"	6 - 2 1/2" wide 4 - 5 1/4" wide	38" = ~1 1/8 yds
	24 Square(s)	24 - 4 1/2" square	108 x 4.5"	3 - 4 1/2" wide	16" = ~1/2 yds
	192 Half-square Triangle(s)	96 - 2 7/8" square	276 x 2.875"	7 - 2 7/8" wide	23" = ~3/4 yds
	48 Rectangle(s) 48 Square(s)	48 - 3 1/6" x 8 1/2" rectangle 48 - 3 1/6" square	560 x 3.167"	14 - 3 83/497" wide	47" = ~1 3/8 yds
	24 Square(s)	24 - 3 1/6" square	76 x 3.167"	2 - 3 83/497" wide	9" = ~1/4 yds

Border1 (For pieced border, add 10" to total length)



Yardage needed: seamless border length = 78" = ~2 1/4 yds

Backing

Yardage needed: 136" = ~3 7/8 yds

Binding

2.5" Strips required: 7

Yardage needed: 17.5" = ~1/2 yds

NOTE: Directional fabric may require an increase in the displayed fabric requirements.