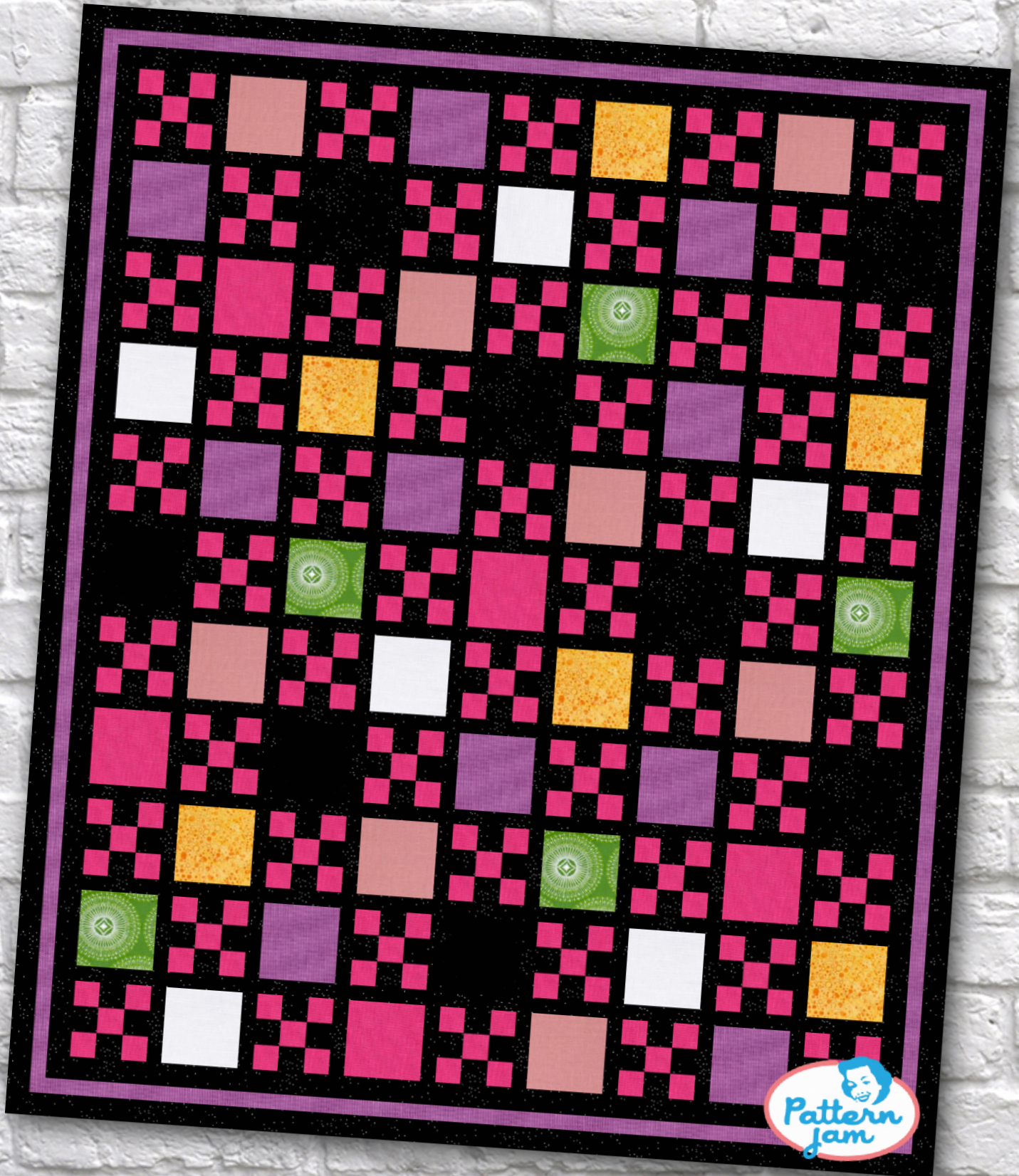


# Hey Boo

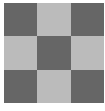


@plpooh23

Overall quilt size: 77" x 91"



## Blocks Used

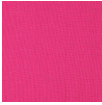
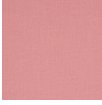
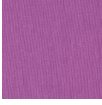

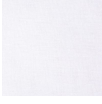



Nine Patch - 50 blocks



Solid - 49 blocks

## Block Info

Fabric	Pieces used	Fabric to cut	Total length needed	40" strips needed	Total Yardage
	256 Square(s)	250 - 2 1/6" square 6 - 5 1/2" square	541.667 x 2.167" 33 x 5.5"	14 - 2 83/497" wide 1 - 5 1/2" wide	38" = ~1 1/8 yds
	205 Square(s)	200 - 2 1/6" square 5 - 5 1/2" square	433.333 x 2.167" 27.5 x 5.5"	11 - 2 83/497" wide 1 - 5 1/2" wide	32" = ~1 yds
	8 Square(s)	8 - 5 1/2" square	44 x 5.5"	2 - 5 1/2" wide	13" = ~3/8 yds
	10 Square(s)	10 - 5 1/2" square	55 x 5.5"	2 - 5 1/2" wide	13" = ~3/8 yds
	6 Square(s)	6 - 5 1/2" square	33 x 5.5"	1 - 5 1/2" wide	8" = ~1/4 yds
	6 Square(s)	6 - 5 1/2" square	33 x 5.5"	1 - 5 1/2" wide	8" = ~1/4 yds
	5 Square(s)	5 - 5 1/2" square	27.5 x 5.5"	1 - 5 1/2" wide	8" = ~1/4 yds
	3 Square(s)	3 - 5 1/2" square	16.5 x 5.5"	1 - 5 1/2" wide	8" = ~1/4 yds

## Sashing



Yardage needed: 36 - 2.5" strips = 90" = ~2 1/2 yds

Border1 (For pieced border, add 10" to total length)



Yardage needed: seamless border length = 85" = ~2 3/8 yds

Border2 (For pieced border, add 10" to total length)



Yardage needed: seamless border length = 89" = ~2 1/2 yds

Border3 (For pieced border, add 10" to total length)



Yardage needed: seamless border length = 95" = ~2 3/4 yds

Backing

Yardage needed: 211" = ~5 7/8 yds

Binding

2.5" Strips required: 9

Yardage needed: 22.5" = ~5/8 yds

NOTE: Directional fabric may require an increase in the displayed fabric requirements.