

Encore!



@aimeelynnestauffer

Overall quilt size: 78" x 96"



Blocks Used



Solid - 48 blocks



Vertical Rectangles - 17 blocks



Horizontal Rectangles - 31 blocks

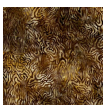


Four Patch - 12 blocks

Block Info

Fabric	Pieces used	Fabric to cut	Total length needed	40" strips needed	Total Yardage
	24 Square(s)	24 - 6 1/2" square	156 x 6.5"	4 - 6 1/2" wide	28" = ~7/8 yds
	48 Rectangle(s) 24 Square(s)	48 - 3 1/2" x 6 1/2" rectangle 24 - 3 1/2" square	396 x 3.5"	10 - 3 1/2" wide	37" = ~1 1/8 yds
	48 Rectangle(s) 24 Square(s)	48 - 3 1/2" x 6 1/2" rectangle 24 - 3 1/2" square	396 x 3.5"	10 - 3 1/2" wide	37" = ~1 1/8 yds
	12 Square(s)	12 - 6 1/2" square	78 x 6.5"	2 - 6 1/2" wide	15" = ~1/2 yds
	6 Square(s)	6 - 6 1/2" square	39 x 6.5"	1 - 6 1/2" wide	9" = ~1/4 yds
	6 Square(s)	6 - 6 1/2" square	39 x 6.5"	1 - 6 1/2" wide	9" = ~1/4 yds

Border1 (For pieced border, add 10" to total length)



Yardage needed: seamless border length = 82" = ~2 3/8 yds

Border2 (For pieced border, add 10" to total length)



Yardage needed: seamless border length = 94" = $\sim 2 \frac{5}{8}$ yds

Border3 (For pieced border, add 10" to total length)



Yardage needed: seamless border length = 100" = $\sim 2 \frac{7}{8}$ yds

Backing

Yardage needed: 224" = $\sim 6 \frac{1}{4}$ yds

Binding

2.5" Strips required: 9

Yardage needed: 22.5" = $\sim \frac{5}{8}$ yds

NOTE: Directional fabric may require an increase in the displayed fabric requirements.