

Quilt 2



@annapurnachougala26

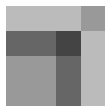
Overall quilt size: 108" x 108"



Blocks Used

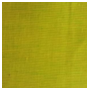

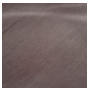


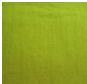


Sawtooth Star - 16 blocks

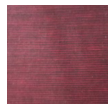


Scot Plaid - 48 blocks

Block Info

Fabric	Pieces used	Fabric to cut	Total length needed	40" strips needed	Total Yardage
	64 Square(s) 64 Quarter-square Triangle(s) 96 Rectangle(s)	64 - 3 1/2" square 16 - 7 1/4" square 96 - 3 1/2" x 9 1/2" rectangle	1136 x 3.5" 116 x 7.25"	29 - 3 1/2" wide 3 - 7 1/4" wide	126" = ~3 1/2 yds
	16 Square(s)	16 - 6 1/2" square	104 x 6.5"	3 - 6 1/2" wide	22" = ~5/8 yds
	128 Half-square Triangle(s)	64 - 3 7/8" square	248 x 3.875"	7 - 3 7/8" wide	30" = ~7/8 yds
	96 Square(s)	48 - 3 1/2" square 48 - 6 1/2" square	168 x 3.5" 312 x 6.5"	5 - 3 1/2" wide 8 - 6 1/2" wide	72" = ~2 yds
	96 Rectangle(s)	96 - 3 1/2" x 6 1/2" rectangle	624 x 3.5"	16 - 3 1/2" wide	58" = ~1 5/8 yds
	48 Square(s)	48 - 3 1/2" square	168 x 3.5"	5 - 3 1/2" wide	20" = ~5/8 yds

Border1 (For pieced border, add 10" to total length)



Yardage needed: seamless border length = 112" = ~3 1/8 yds

Backing

Yardage needed: 337" = ~9 3/8 yds

Binding

2.5" Strips required: 11

Yardage needed: $27.5" = \sim 7/8$ yds

NOTE: Directional fabric may require an increase in the displayed fabric requirements.