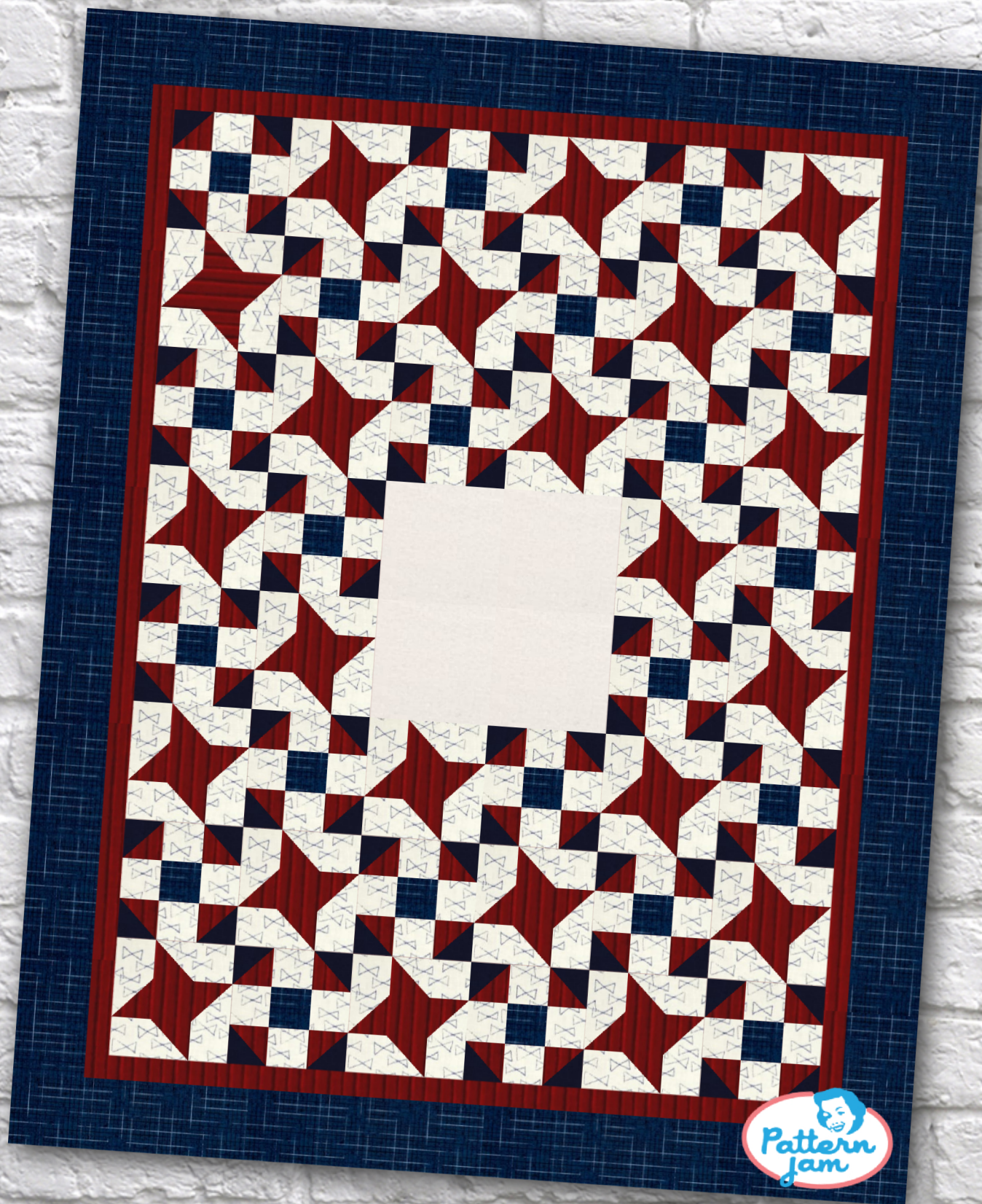


Home Of The Brave



@susan393

Overall quilt size: 52" x 64"



Blocks Used



Shoo Fly - 22 blocks


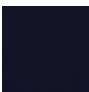


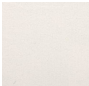


Friendship Star - 22 blocks

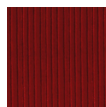


Solid - 4 blocks

Block Info

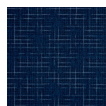
Fabric	Pieces used	Fabric to cut	Total length needed	40" strips needed	Total Yardage
	176 Half-square Triangle(s) 22 Square(s)	88 - 2 7/8" square 22 - 2 1/2" square	253 x 2.875" 55 x 2.5"	7 - 2 7/8" wide 2 - 2 1/2" wide	28" = ~7/8 yds
	88 Half-square Triangle(s)	44 - 2 7/8" square	126.5 x 2.875"	4 - 2 7/8" wide	14" = ~1/2 yds
	176 Square(s) 88 Half-square Triangle(s)	176 - 2 1/2" square 44 - 2 7/8" square	440 x 2.5" 126.5 x 2.875"	11 - 2 1/2" wide 4 - 2 7/8" wide	41" = ~1 1/4 yds
	22 Square(s)	22 - 2 1/2" square	55 x 2.5"	2 - 2 1/2" wide	7" = ~1/4 yds
	4 Square(s)	4 - 6 1/2" square	26 x 6.5"	1 - 6 1/2" wide	9" = ~1/4 yds

Border1 (For pieced border, add 10" to total length)



Yardage needed: seamless border length = 56" = ~1 5/8 yds

Border2 (For pieced border, add 10" to total length)



Yardage needed: seamless border length = 68" = ~2 yds

Backing

Yardage needed: 108" = ~3 yds

Binding

2.5" Strips required: 6

Yardage needed: 15" = ~1/2 yds

NOTE: Directional fabric may require an increase in the displayed fabric requirements.