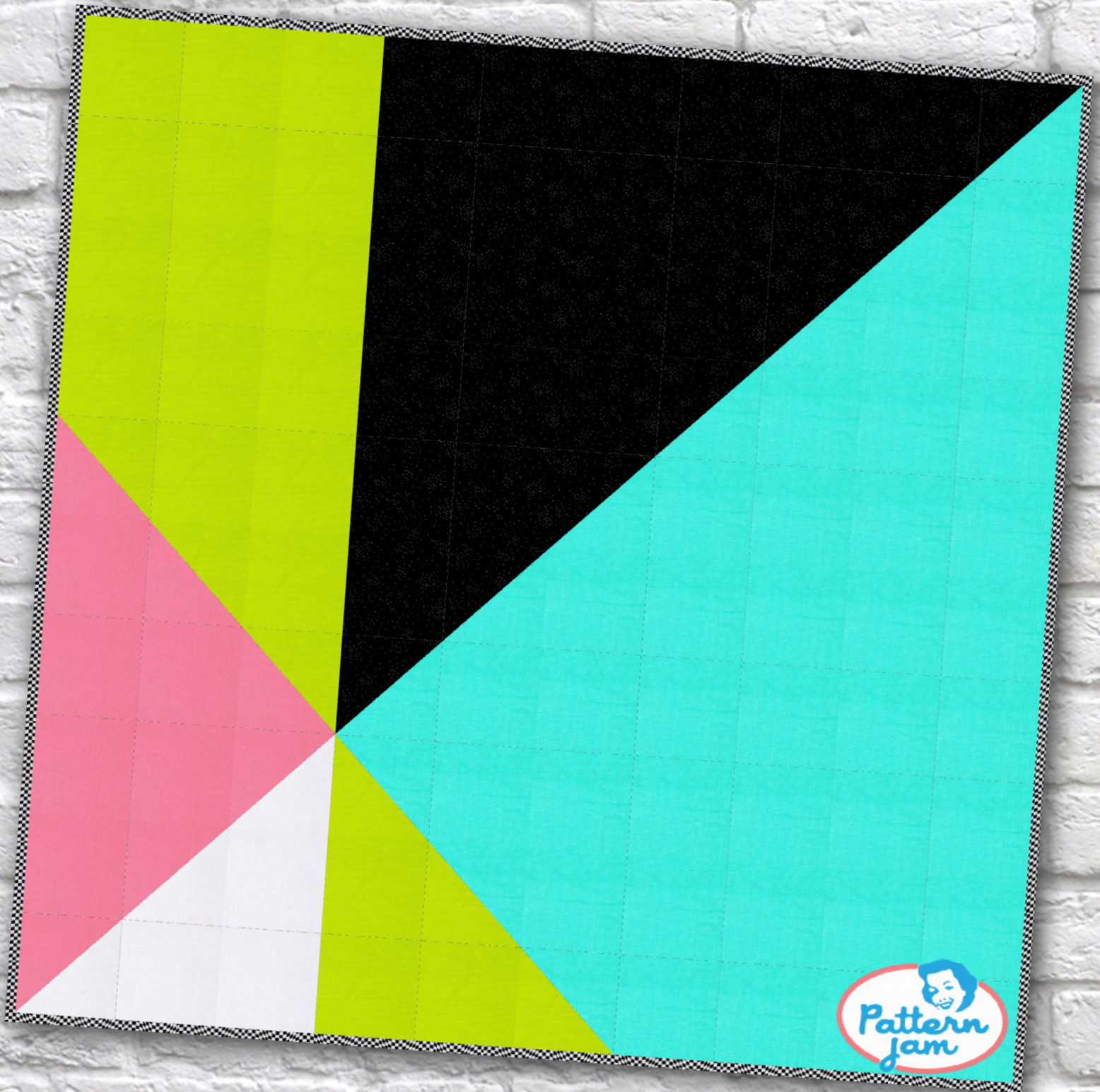


Focal Point



@mauandkim

Overall quilt size: 102" x 102"



Blocks Used



Solid - 84 blocks








Half Square Triangle - 10 blocks

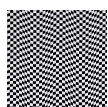


Half Square Triangle - 6 blocks

Block Info

| Fabric | Pieces used | Fabric to cut | Total length needed | 40" strips needed | Total Yardage |
|---|--|---|---------------------------------|---------------------------------------|-------------------|
|  | 18 Square(s) 6 Half-square Triangle(s) | 18 - 10 1/2" square 4 - 10 7/8" square | 189 x 10.5" 43.5 x 10.875" | 5 - 10 1/2" wide 2 - 10 7/8" wide | 77" = ~2 1/4 yds |
|  | 21 Square(s) 7 Half-square Triangle(s) | 21 - 10 1/2" square 4 - 10 7/8" square | 220.5 x 10.5" 43.5 x 10.875" | 6 - 10 1/2" wide 2 - 10 7/8" wide | 87" = ~2 1/2 yds |
|  | 10 Half-square Triangle(s) 36 Square(s) | 6 - 10 7/8" square 36 - 10 1/2" square | 65.25 x 10.875" 378 x 10.5" | 2 - 10 7/8" wide 10 - 10 1/2" wide | 129" = ~3 5/8 yds |
|  | 6 Half-square Triangle(s) 6 Square(s) | 4 - 10 7/8" square 6 - 10 1/2" square | 43.5 x 10.875" 63 x 10.5" | 2 - 10 7/8" wide 2 - 10 1/2" wide | 45" = ~1 1/4 yds |
|  | 3 Half-square Triangle(s) 3 Square(s) | 2 - 10 7/8" square 3 - 10 1/2" square | 21.75 x 10.875" 31.5 x 10.5" | 1 - 10 7/8" wide 1 - 10 1/2" wide | 24" = ~3/4 yds |

Border1 (For pieced border, add 10" to total length)



Yardage needed: seamless border length = 106" = ~3 yds

Backing

Yardage needed: 303" = ~8 1/2 yds

Binding

2.5" Strips required: 11

Yardage needed: 27.5" = ~7/8 yds

NOTE: Directional fabric may require an increase in the displayed fabric requirements.