

Coffe



@yudymorag

Overall quilt size: 70" x 94"



Blocks Used



Plain Block - 35 blocks

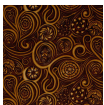


King's Crown - 35 blocks

Block Info

| Fabric | Pieces used | Fabric to cut | Total length needed | 40" strips needed | Total Yardage |
|--------|--|---|--------------------------------|-------------------------------------|------------------|
| | 280 Square(s) | 280 - 2 1/2" square | 700 x 2.5" | 18 - 2 1/2" wide | 47" = ~1 3/8 yds |
| | 140 Rectangle(s) 140 Quarter-square Triangle(s) | 140 - 2 1/2" x 4 1/2" rectangle 35 - 5 1/4" square | 630 x 2.5" 183.75 x 5.25" | 16 - 2 1/2" wide 5 - 5 1/4" wide | 69" = ~2 yds |
| | 35 Square(s) | 35 - 4 1/2" square | 157.5 x 4.5" | 4 - 4 1/2" wide | 20" = ~5/8 yds |
| | 35 Square(s) 280 Half-square Triangle(s) | 35 - 4 1/2" square 140 - 2 7/8" square | 157.5 x 4.5" 402.5 x 2.875" | 4 - 4 1/2" wide 11 - 2 7/8" wide | 52" = ~1 1/2 yds |

Border1 (For pieced border, add 10" to total length)



Yardage needed: seamless border length = 88" = ~2 1/2 yds

Border2 (For pieced border, add 10" to total length)



Yardage needed: seamless border length = 98" = ~2 3/4 yds

Backing

Yardage needed: 199" = ~5 5/8 yds

Binding

2.5" Strips required: 9

Yardage needed: 22.5" = ~5/8 yds

NOTE: Directional fabric may require an increase in the displayed fabric requirements.