

# Clemson



@ricksanchez24

Overall quilt size: 96" x 84"




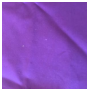


## Blocks Used

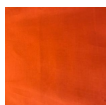


Spool - 42 blocks

## Block Info

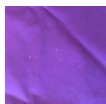
Fabric	Pieces used	Fabric to cut	Total length needed	40" strips needed	Total Yardage
	84 Rectangle(s)	84 - 3 1/2" x 6 1/2"	546 x 3.5"	14 - 3 1/2"	132" = ~3 3/4 yds
	168 Half-square	rectangle	325.5 x 3.875"	wide	
	Triangle(s)	84 - 3 7/8" square	273 x 6.5"	9 - 3 7/8" wide	
	42 Square(s)	42 - 6 1/2" square		7 - 6 1/2" wide	
	168 Half-square	84 - 3 7/8" square	325.5 x 3.875"	9 - 3 7/8" wide	86" = ~2 1/2 yds
	Triangle(s)	84 - 3 1/2" x 6 1/2"	546 x 3.5"	14 - 3 1/2"	
	84 Rectangle(s)	rectangle		wide	

Border1 (For pieced border, add 10" to total length)



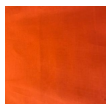
Yardage needed: seamless border length = 80" = ~2 1/4 yds

Border2 (For pieced border, add 10" to total length)



Yardage needed: seamless border length = 86" = ~2 1/2 yds

Border3 (For pieced border, add 10" to total length)



Yardage needed: seamless border length = 88" = ~2 1/2 yds

Backing

Yardage needed: 240" = ~6 3/4 yds

Binding

2.5" Strips required: 9

Yardage needed: 22.5" = ~5/8 yds

NOTE: Directional fabric may require an increase in the displayed fabric requirements.