

Texas A&M



@triciawood2018

Overall quilt size: 94" x 118"




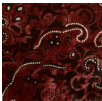
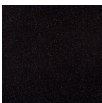


Blocks Used



Solid - 63 blocks

Block Info

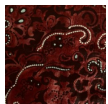
Fabric	Pieces used	Fabric to cut	Total length needed	40" strips needed	Total Yardage
	11 Square(s)	11 - 12 1/2" square	137.5 x 12.5"	4 - 12 1/2" wide	52" = ~1 1/2 yds
	14 Square(s)	14 - 12 1/2" square	175 x 12.5"	5 - 12 1/2" wide	65" = ~1 7/8 yds
	17 Square(s)	17 - 12 1/2" square	212.5 x 12.5"	6 - 12 1/2" wide	77" = ~2 1/4 yds
	13 Square(s)	13 - 12 1/2" square	162.5 x 12.5"	5 - 12 1/2" wide	65" = ~1 7/8 yds
	8 Square(s)	8 - 12 1/2" square	100 x 12.5"	3 - 12 1/2" wide	40" = ~1 1/8 yds

Border1 (For pieced border, add 10" to total length)



Yardage needed: seamless border length = 116" = ~3 1/4 yds

Border2 (For pieced border, add 10" to total length)



Yardage needed: seamless border length = 122" = ~3 1/2 yds

Backing

Yardage needed: 322" = ~9 yds

Binding

2.5" Strips required: 11

Yardage needed: $27.5" = \sim 7/8$ yds

NOTE: Directional fabric may require an increase in the displayed fabric requirements.