

Farm



@panda1mk

Overall quilt size: 48" x 48"





Blocks Used

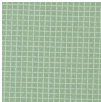


Solid - 9 blocks

Block Info

Fabric	Pieces used	Fabric to cut	Total length needed	40" strips needed	Total Yardage
	5 Square(s)	5 - 12 1/2" square	62.5 x 12.5"	2 - 12 1/2" wide	27" = ~3/4 yds
	4 Square(s)	4 - 12 1/2" square	50 x 12.5"	2 - 12 1/2" wide	27" = ~3/4 yds

Sashing



Yardage needed: 10 - 2.5" strips = 25" = ~3/4 yds

Border1 (For pieced border, add 10" to total length)



Yardage needed: seamless border length = 52" = ~1 1/2 yds

Backing

Yardage needed: 79" = ~2 1/4 yds

Binding

2.5" Strips required: 5

Yardage needed: 12.5" = ~3/8 yds

NOTE: Directional fabric may require an increase in the displayed fabric requirements.