

Stars On Fire



@fjordbuffs0v

Overall quilt size: 104" x 136"



Blocks Used


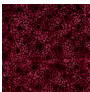


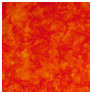
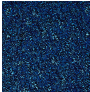





Half Square Triangle - 166 blocks

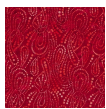


Solid - 26 blocks

Block Info

Fabric	Pieces used	Fabric to cut	Total length needed	40" strips needed	Total Yardage
	126 Half-square Triangle(s) 26 Square(s)	63 - 8 7/8" square 26 - 8 1/2" square	559.125 x 8.875" 221 x 8.5"	14 - 8 7/8" wide 6 - 8 1/2" wide	178" = ~5 yds
	27 Half-square Triangle(s)	14 - 8 7/8" square	124.25 x 8.875"	4 - 8 7/8" wide	38" = ~1 1/8 yds
	23 Half-square Triangle(s)	12 - 8 7/8" square	106.5 x 8.875"	3 - 8 7/8" wide	29" = ~7/8 yds
	28 Half-square Triangle(s)	14 - 8 7/8" square	124.25 x 8.875"	4 - 8 7/8" wide	38" = ~1 1/8 yds
	22 Half-square Triangle(s)	11 - 8 7/8" square	97.625 x 8.875"	3 - 8 7/8" wide	29" = ~7/8 yds
	26 Half-square Triangle(s)	14 - 8 7/8" square	124.25 x 8.875"	4 - 8 7/8" wide	38" = ~1 1/8 yds
	28 Half-square Triangle(s)	15 - 8 7/8" square	133.125 x 8.875"	4 - 8 7/8" wide	38" = ~1 1/8 yds
	24 Half-square Triangle(s)	13 - 8 7/8" square	115.375 x 8.875"	3 - 8 7/8" wide	29" = ~7/8 yds
	28 Half-square Triangle(s)	14 - 8 7/8" square	124.25 x 8.875"	4 - 8 7/8" wide	38" = ~1 1/8 yds

Border1 (For pieced border, add 10" to total length)



Yardage needed: seamless border length = 140" = ~4 yds

Backing

Yardage needed: 404" = ~11 1/4 yds

Binding

2.5" Strips required: 12

Yardage needed: 30" = ~7/8 yds

NOTE: Directional fabric may require an increase in the displayed fabric requirements.